

ORIGINAL RESEARCH

Open Access



# Integration of PV system with SMES based on model predictive control for utility grid reliability improvement

Abualkasim Bakeer<sup>1,2</sup>, Hossam S. Salama<sup>1,3\*</sup>  and Istvan Vokony<sup>3</sup>

## Abstract

This paper describes the integration of a photovoltaic (PV) renewable energy source with a superconducting magnetic energy storage (SMES) system. The integrated system can improve the voltage stability of the utility grid and achieve power leveling. The control schemes employ model predictive control (MPC), which has gained significant attention in recent years because of its advantages such as fast response and simple implementation. The PV system provides maximum power at various irradiation levels using the incremental conductance technique (INC). The interfaced grid side converter of the SMES can control the grid voltage by regulating its injected reactive power to the grid, while the charge and discharge operation of the SMES coil can be managed by the system operator to inject/absorb active power to/from the grid to achieve the power leveling strategy. Simulation results based on MATLAB/Simulink® software prove the fast response of the system control objectives in tracking the setpoints at different loading scenarios and PV irradiance levels, while the SMES injects/absorbs active and reactive power to/from the grid during various events to improve the voltage response and achieve power leveling strategy.

**Keywords:** Model predictive control (MPC), Superconducting magnetic energy storage (SMES), Photovoltaic (PV) systems, Voltage improvement, Power leveling strategy

## 1 Introduction

Economic development of countries is tightly bound up with energy, and this has imposed pressure on traditional energy sources. Thus, renewable energy sources (RESs) are being used to decrease the consumption of fossil fuels and environment pollution. In the coming years, RESs will become preeminent among energy sources, as the world's renewable power capacity has reached (2378 GW in 2018 [1]). One of these RESs is solar energy used by photovoltaic (PV) systems, whose capacity around the world increased to 505 GW in 2018 compared to 405 GW in 2017 [1]. PV systems have many advantages, such as the reduction of electricity

bills and high energy costs; the support of energy independence, investment and economic improvement, environmental conservation; and they also contribute to sustainability. Nevertheless, PV systems rely on sunshine, so the power generated from PV is intermittent and unpredictable. This leads to the fluctuation of voltage and frequency of the connected power system.

The control of voltage and power is considered as one of the crucial issues affecting the stability of a power system. Reactive power control should be used to avoid voltage collapse and ensure that voltages at all buses are within the allowable limits. One of the most critical requirements of power system operation is to balance the load and generation during various operational events. The application of controlled energy storage systems is a vital solution for overcoming the problem of intermittent power generated from PV systems and to achieve power and voltage stability in the whole system. Energy

\* Correspondence: [hossam.salama@vet.bme.hu](mailto:hossam.salama@vet.bme.hu)

<sup>1</sup>Electrical Engineering Department, Faculty of Engineering, Aswan University, Aswan 81542, Egypt

<sup>3</sup>Department of Electric Power Engineering, Budapest University of Technology and Economics, Budapest 1111, Hungary

Full list of author information is available at the end of the article



© The Author(s). 2021 **Open Access** This article is licensed under a Creative Commons Attribution 4.0 International License, which permits use, sharing, adaptation, distribution and reproduction in any medium or format, as long as you give appropriate credit to the original author(s) and the source, provide a link to the Creative Commons licence, and indicate if changes were made. The images or other third party material in this article are included in the article's Creative Commons licence, unless indicated otherwise in a credit line to the material. If material is not included in the article's Creative Commons licence and your intended use is not permitted by statutory regulation or exceeds the permitted use, you will need to obtain permission directly from the copyright holder. To view a copy of this licence, visit <http://creativecommons.org/licenses/by/4.0/>.

storage systems (ESSs) use various methods for energy conversion, as shown in Fig. 1 [2]. Time response, life span, charge/discharge cycles, and efficiency are the most vital factors to be considered when adopting ESSs. According to the forecast of the International Energy Association (IEA), ESS capacity should be raised to 266 GW by 2030 to avoid global warming [3], while Bloomberg New Energy Finance expects such requirements to be achieved by the global ESSs market.

By 2040, the total capacity of ESSs will reach 942 GW, which represents around \$620 billion investment in the next two decades [3]. The superconducting magnetic energy storage (SMES) system is one of the preferred options in power system applications [4], despite its high capital cost of up to 10,000 \$/kWh [5, 6]. As SMES can provide an unlimited number of charging and discharging cycles, it has a longer lifetime than other storage elements [7].

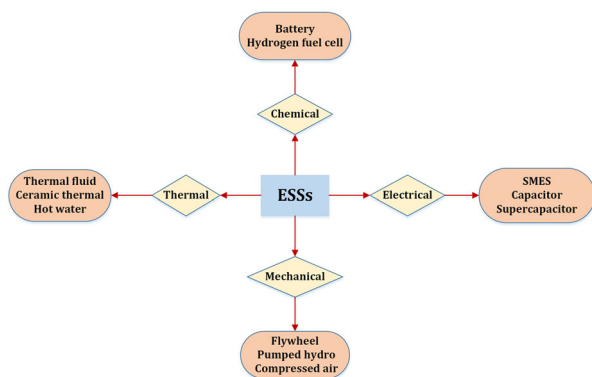
Model predictive control (MPC) has come into focus in recent years as the control approach for many power electronics converters [8–10]. It controls the converter switches based on a future point of view using a discrete model of the control variables to predict their trajectory at the different switching states. The popularity of MPC is due to its advantages, such as fast tracking of setpoint during system transients, capability of handling multiple variables within a single cost function, and easy implementation, especially with the discrete nature of the switches, where the output is directly applied to the converter switches [11]. Also, MPC provides superior performance in the steady-state compared to the conventional dual-loop based PI regulator [12].

A PV system has been used to contribute to load frequency control (LFC) by utilizing MPC [13]. A hybrid SMES and PV power system is introduced in [14], using a current source inverter. In this reference, the battery is inserted at the DC bus to improve the performance under grid fault conditions. However, this solution exhibits low dynamics at the transient, as the control

technique has been carried out using a PI controller. The authors in [15] apply MPC to regulate the DC voltage of the SMES without considering the intermittency of any renewable energy resources in the system. The results prove that the losses due to eddy currents can be minimized by using MPC instead of a PI controller. The integration of SMES and RESs based on wind power is introduced in [16], and the results prove the feasibility of MPC for fast decrease of the disturbances in the system. In [17], MPC is used directly to control the frequency of the power system, though it lacks in-depth analysis. An adaptive MPC is proposed in [18] to control the frequency deviation and the constraints of the SMES profit operation inside the optimization law, while in [19], a genetic algorithm is used to keep the operational constraints of the SMES within permitted limits. Recently, MPC has been adopted to manage LFC and has been combined with a metaheuristic optimization approach of the multi-verse optimizer in the presence of RESs and ESSs in a large multi-interconnected system [20]. The sooty tern optimization algorithm is used to design the optimal MPC in LFC applications in multi-RESs power plants [21], while optimal design of MPC based on the bat-inspired algorithm is proposed in [22] with the application of SMES and capacitive energy storage for LFC.

This paper aims to employ the fast response feature of MPC to improve the voltage response of the power system containing RESs. With MPC, the effect of environmental condition variation can be minimized, and the power fluctuation of the utility grid can be reduced. The PV array here is designed to provide the maximum power available at the current environmental conditions; while the SMES energy storage system can supply or absorb active/reactive power to retain the voltage at the nominal value at the point of common connection (PCC).

Table 1 compares the proposed work and the most featured approaches in the literature. As seen, voltage stability, grid power leveling strategy, control methods of SMES and PV system, and the overall system reliability are the main aspects of the comparison. MPC is involved with only a SMES system in [15] without considering RESs, in which the SMES is used to reduce the eddy current losses and control the power and voltage. Meanwhile, in [23], a SMES system based on MPC using a bat-inspired algorithm, and a gravitational search algorithm is proposed for LFC in a multi-area power system. A PI controller is proposed in [24] to minimize the fluctuation in power and voltage, but this method fails to achieve power leveling during PV power fluctuation. MPC is used with PV in [25] to provide PV-grid connection without any additional stages. In [26], the SMES and PV are separately controlled, where the SMES



**Fig. 1** The various types of energy storage systems

**Table 1** Comparison of similar approaches in the literature

Reference	Control technique of SMES	Control technique of PV	Voltage stability	Power leveling strategy	Overall reliability of the system
[15]	MPC	×	✓	✓	✓
[23]	MPC	×	×	✓	×
[24]	PI	PI	✓	×	×
[25]	×	MPC	✓	×	✓
[26]	FLC	PI	✓	✓	✓
<b>Proposed</b>	<b>MPC</b>	<b>MPC</b>	✓	✓	✓

system is based on FLC and the PV is based on a PI controller. Thus, the main contributions of the proposed work can be summarized as follows:

- It improves the reliability and response of the electrical grid using the SMES system to control the voltage and power during step changes in the incident irradiance on PV array and load;
- It adapts the MPC technique in the studied system considering the coordination between the control goals;
- It extracts the maximum power from a PV array in different environmental conditions based on the incremental conductance (INC) algorithm and MPC;
- It employs MPC control for both SMES and PV systems to achieve voltage stability and power leveling;
- It tests the robustness of the proposed control technique during step changes of load and PV irradiance.

The remainder of the paper starts with a complete description of the studied system in Section 2. The design and modeling of MPC for the power converters connecting both PV and SMES to the PCC are discussed in Section 3. The simulation results are given and discussed in Section 4 under different loading conditions, while the conclusion of the paper is drawn in Section 5.

## 2 Description of the studied system

Figure 2 depicts the studied system that integrates the PV system with a SMES. The considered system consists of a 0.5 MW PV array, a SMES unit with rated current of 4 kA, and a load. All these components are connected at the PCC of the utility grid through step-up transformers. The manufacturer of the utilized solar panel module is Sunpower-305-WHT, and the aggregated PV array comprises  $5 \times 350$  modules. The I-V and P-V characteristics of the utilized PV array at a temperature of 25 °C are shown in Fig. 3. The SMES coil has a resistance of approximately zero in the superconducting state. The cooling of the

SMES coil is achieved through a cryogenic system, which has a refrigerator and an insulated vacuum cryostat with a vacuum pump to immerse the coil in a helium tank at 4.2 K.

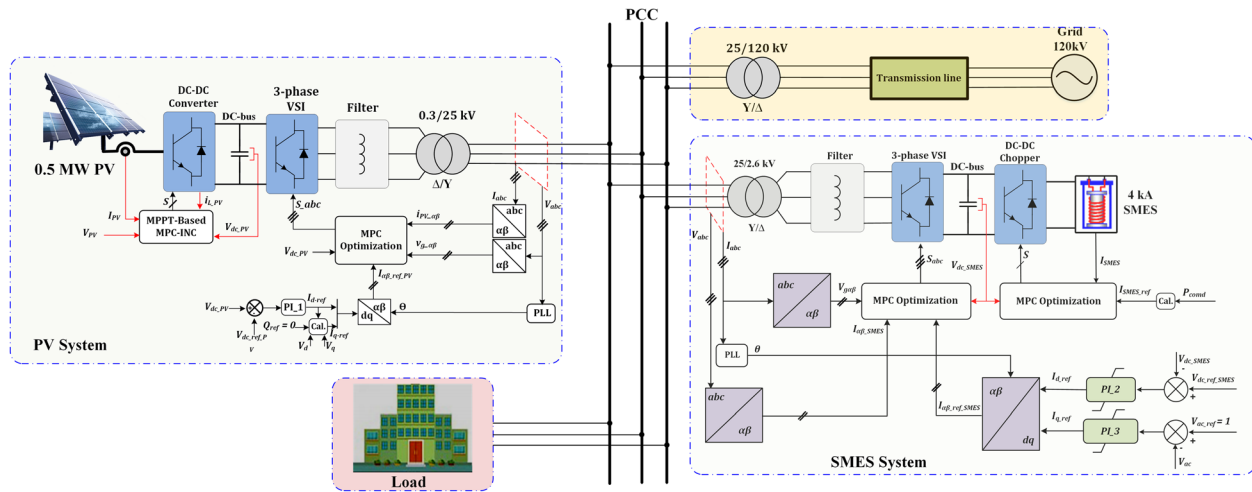
## 3 System modeling with MPC

In recent years, a lot of work has been carried out to evaluate MPC performance as an emerging control strategy for power converters compared to the most popular control technique based on the classical PI controller. The summary of the comparison is provided in Table 2, and the listed viewpoints have been validated using experimental results. It is clear that the MPC has promising features compared to the classical PI controller.

MPC is a straightforward control technique that starts with defining the discrete model of the control objectives, and ends with selecting the optimal switching vector to be applied to the converter switches during the next sampling cycle. The discrete model of the variables is usually derived by applying the Euler theory (forward or backward) to the differential equations of the state variables in each possible operating case.

The switching states of the converter power devices are updated after solving the optimization problem at every sampling time  $T_s$ . Inside the optimization law, the weighting factors can be involved to penalize the important terms in the control decision in the case of multiple control objectives. However, there is no direct mathematical formula to define the values of these weighting factors and the problem is still under study. Limited guidelines are presented in [30] based on some applications.

In this paper, the design of the cost function does not employ any weighting factors, as it has only two current components with the same priority to simplify the control design. The following sub-sections explain in detail the modeling of MPC for both the PV system (comprised of a boost converter cascaded with a grid side inverter) and the SMES system (comprised of a bidirectional DC-DC chopper cascaded with a grid side inverter). In all the power converters in the studied system, the switching devices are assumed to be ideal.



**Fig. 2** Description of the studied system with the integration of renewable energy and a SMES into the utility grid

### 3.1 Design of the MPC for a PV system

The complete block diagram to interface the PV array into the utility grid is shown in Fig. 4. The primary function of the boost converter is to extract the maximum power available from the PV array at the current irradiation and temperature conditions. This is achieved by controlling the main switch  $S_{bc}$  in the boost converter. The obtained active power from the PV array is then transmitted to the utility grid using the grid side inverter.

#### 3.1.1 MPPT algorithm

The interfaced converter is used to boost the low voltage generated from the PV array to the high DC bus voltage at the inverter. The incremental conductance (INC) algorithm, shown in Fig. 5, has superior performance in tracking the peak power of the PV module and improving the dynamic performance in rapidly varying conditions [31]. The algorithm of INC starts with measuring the voltage and current at the PV array terminals. Then the algorithm generates the reference value of the

inductor current  $I_{Lref\_PV}$  of the boost converter based on the signs of the changes in the voltage and power compared to the previous step. The incremental value  $\Delta E$  to update the value of  $I_{Lref\_PV}$  in the INC algorithm is selected as a trade-off between the speed of tracking the maximum power point (MPP) and power oscillation.

The discrete model for the inductor current in the boost converter  $i_{L\_PV}$  needs to be defined to predict its trajectory in the future at the two possible states of the switch  $S_{bc}$  i.e., ON (binary 1) or OFF (binary 0). In the ON state, the inductor has a positive voltage and the diode  $D_{bc}$  is reverse biased. Thus the inductor begins to charge in a linear fashion. In the OFF state, the inductor voltage is negative and the stored energy in the inductor releases to the grid side inverter. The differential equations of  $i_{L\_PV}$  when the switch is ON and OFF according to the circuit configuration are given in (1), where  $L_{PV}$  is the inductance of the boost converter,  $R_{L\_PV}$  is the ESR of the inductor,  $L_{PV}$ ,  $V_{PV}(t)$  is the PV array voltage, and  $V_{dc\_PV}(t)$  is the DC link voltage at the output of the boost converter.

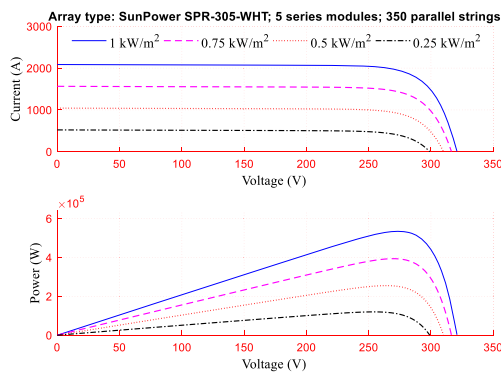
The Euler discretization rule for the differential term during the sampling time of  $T_s$  is shown as:

$$L_{PV} \frac{di_{L\_PV}(t)}{dt} = \begin{cases} V_{PV}(t) - R_{L\_PV}i_{L\_PV}(t) & \text{if } S_{bc} \text{ ON} \\ (V_{PV}(t) - V_{dc\_PV}(t)) - R_{L\_PV}i_{L\_PV}(t) & \text{if } S_{bc} \text{ OFF} \end{cases} \quad (1)$$

where  $k$  refers to the current instant while  $(k + 1)$  refers to the future instant.

By applying (2) to (1), the discrete model of the inductor current during ON and OFF states of the switch  $S_{bc}$  can be derived as given in (3) below.

After defining the prediction model of the inductor current, the cost function, which decides the control action, must be defined. The cost function minimizes the



**Fig. 3** The characteristics of the PV array at different irradiation levels and the temperature (T) equals 25 °C

**Table 2** Comparison of the performance of the MPC and the classical PI controller according to the literature

Point of view	PI controller	MPC	References
Dynamic response	×	✓	[27–29]
Steady-state error	×	✓	
Total harmonic distortion (THD)	×	✓	
Constraints	×	✓	No need for experimental validation, it is based on the control concept inside the cost function.
Multi-variables control	×	✓	

error between the predicted inductor current and the generated reference from the INC algorithm to achieve the MPPT, and is given as (4).

$$\frac{dy}{dt} = \frac{y(k+1) - y(k)}{T_s} \tag{2}$$

The final switching state of the boost converter is selected based on the minimum value of the cost function from both states.

$$i_{L\_PV}(k+1) = \begin{cases} \frac{T_s}{L_{PV}} V_{PV}(k) + i_{L\_PV}(k) \left(1 - \frac{T_s R_{L\_PV}}{L_{PV}}\right) & \text{if } S_{bc} \text{ ON} \\ \frac{T_s}{L_{PV}} (V_{PV}(k) - V_{dc\_PV}(k)) + i_{L\_PV}(k) \left(1 - \frac{T_s R_{L\_PV}}{L_{PV}}\right) & \text{if } S_{bc} \text{ OFF} \end{cases} \tag{3}$$

$$J_{i_{L\_PV}} = |I_{Lref\_PV} - i_{L\_PV}(k+1)| \tag{4}$$

**3.1.2 Grid side inverter**

It is essential for the inverter to keep the DC link voltage constant while synchronizing with the utility grid. The voltage at the DC link is regulated by controlling the *d*-axis component of the inverter current using a PI

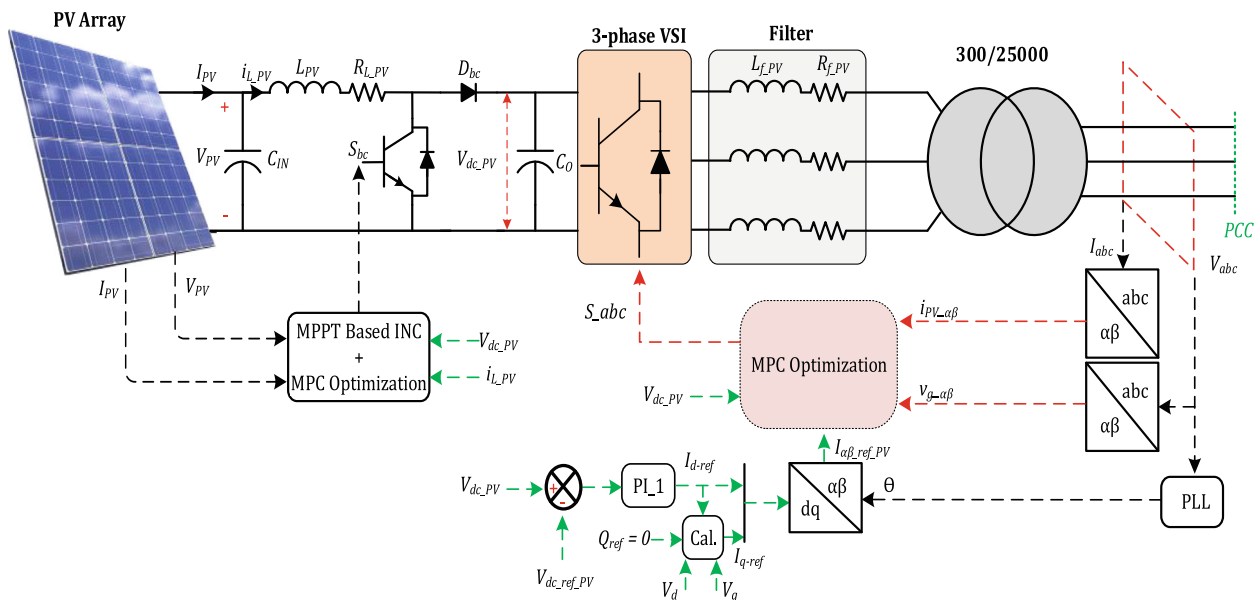
regulator. The parameters of the utilized PI controller gains are listed in Table 3. Here, the reference reactive power is zero, which sets the reference *q*-axis current of the inverter, so the grid side inverter can provide the grid with active power at a unity power factor. Then, the reference *dq* currents are converted into the stationary  $\alpha\beta$  frames  $i_{\alpha\beta\_ref\_PV}$  with the instantaneous grid angle generated from the phase-locked loop. So the reference value of the inverter current is obtained and the next step is to define the prediction model of the grid current as a function of the switching patterns of the inverter, as listed in Table 2. The switching states can be expressed in the  $\alpha\beta$  vectorial form using the transformation of:

$$S = \frac{2}{3} (S_1 + aS_2 + a^2S_3) \tag{5}$$

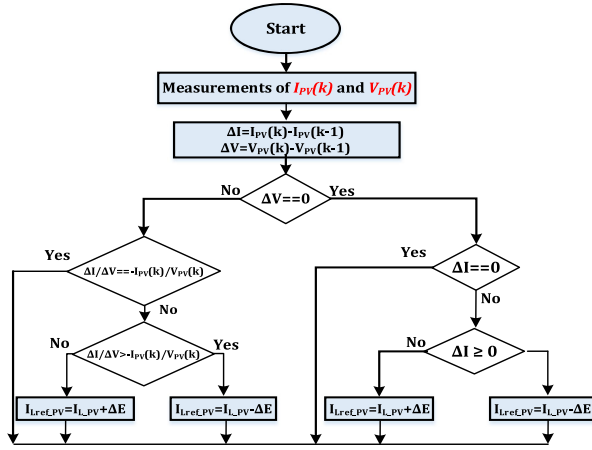
where  $a = e^{j(2\pi/3)}$ .

The effect of the voltage vectors  $V_0$  and  $V_7$  is the same, so the number of the possible switching states can be considered to be 7 instead of 8 to reduce calculation.

An *RL* filter is used to reduce the harmonics in the injected current into the grid. The detailed derivation of the VSC current control based on MPC has been



**Fig. 4** Configuration of the PV system with MPC for MPPT and grid-connected operations



**Fig. 5** Flowchart of the MPPT based on the incremental conductance (INC) algorithm

reported in several publications [9, 10], so only a brief description is introduced here. The voltage difference between the filter  $L_{f\_PV}$  terminals equals the inverter output voltage minus the grid voltage as:

$$L_{f\_PV} \frac{di_g}{dt} = (V_x(k+1) - V_g(k)) - i_g(t)R_{f\_PV} \quad (6)$$

Again, by calling on the Euler forward method in (1), the prediction model of the inverter current in the next time step ( $k+1$ ) can be expressed as

$$i_{\alpha\beta\_PV}(k+1) = \frac{T_s(V_x(k+1) - V_{g\_a\beta}(k)) + L_{f\_PV}i_{\alpha\beta\_PV}(k)}{L_{f\_PV} + R_{f\_PV}T_s} \quad (7)$$

In (6) and (7),  $x$  is the number of the switching vectors in Table 4, and  $x \in [0:7]$ .  $v_{g\_a\beta}(k)$  is the grid voltage,  $i_{\alpha\beta\_PV}(k)$  is the actual grid current in the stationary frame representation,  $R_{f\_PV}$  and  $L_{f\_PV}$  are the resistance and inductance of the three-phase current filter, respectively.  $V_x(k+1)$  is the space vector of inverter output voltage ( $V_0:V_7$ ) in  $(\alpha,\beta)$  coordinating system, which can be obtained by:

$$V_x(k+1) = V_{dc\_PV}S. \quad (8)$$

After the discrete model of the inverter current is derived, the inverter behavior in the future can be predicted during the possible switching states, and the optimization problem can be defined. This optimization law is solved online at each sampling interval. The action

of the MPC algorithm (i.e. optimal switching state) is applied directly to the three-phase inverter without using the modulation stage. The utilized optimization law is given as:

$$J = |i_{\alpha\_ref} - i_{\alpha}(k+1)| + |i_{\beta\_ref} - i_{\beta}(k+1)| \quad (9)$$

where  $i_{\alpha\_ref}$  and  $i_{\beta\_ref}$  are the two-axes reference grid current  $i_{\alpha\beta\_ref\_PV}$ , while  $i_{\alpha}(k+1)$  and  $i_{\beta}(k+1)$  are the corresponding components of the predicted grid current  $i_{\alpha\beta\_PV}(k+1)$ .

### 3.2 Design of MPC for SMES

The SMES is interfaced into the power system through a DC-DC chopper cascaded with a three-phase inverter as shown in Fig. 6. The main function of the DC-DC chopper is to ensure that the SMES follows the active power command from the system operator, while the grid side inverter is responsible for regulating the DC link voltage of the SMES and the grid AC voltage through reactive power compensation. Table 5 lists the gain values of the PI controllers used for the DC and AC voltage regulation.

#### 3.2.1 DC-DC chopper

The reference value of the SMES current can be defined from the active power command  $P_{cmd}$  from the system operator as:

$$I_{SMES\_ref} = \sqrt{I_0^2 - \frac{2}{L_{SMES}} \int P_{cmd} dt} \quad (10)$$

where  $L_{SMES}$  is the SMES coil inductance, and  $I_0$  is the initial current of the SMES coil.

The power command can be positive or negative, where a positive sign means that the SMES exports active power into the grid, while a negative one means absorbing active power from the utility grid as:

$$P_{cmd} = -P_{grid} - P_{PV} + P_{Load} \quad (11)$$

where  $P_{grid}$  is the active power of the grid,  $P_{PV}$  is the extracted active power from the PV array, and  $P_{load}$  is the load active power.

The two switches of the DC-DC chopper are derived with the same signal of either ON or OFF, instead of using the four states in the prediction calculation to reduce computational burden. The standby case of the SMES coil (i.e., the freewheeling state) goes through switching between the ON and OFF states in two cascaded sampling intervals. In this case, the SMES current circulates in the chopper. The equivalent representation of the SMES coil consists of only the inductance value, since the SMES operates in the superconducting state without energy losses in this condition. The coil of the SMES starts charging when the switches are turned on

**Table 3** Parameters of the PI controller for the PV part

	$K_p$	$K_i$
$V_{dc\_PV} (PL_1)$	3	2000

**Table 4** Switching states of the three-phase inverter

$x$	$V_x$	$S_1$	$S_2$	$S_3$	$S_4$	$S_5$	$S_6$
0	$V_0$	0	0	0	1	1	1
1	$V_1$	1	0	0	0	1	1
2	$V_2$	1	1	0	0	0	1
3	$V_3$	0	1	0	1	0	1
4	$V_4$	0	1	1	1	0	0
5	$V_5$	0	0	1	1	1	0
6	$V_6$	1	0	1	0	1	0
7	$V_7$	1	1	1	0	0	0

and a positive voltage is applied across the coil terminal; while it starts discharging when the switches are turned OFF with a negative voltage. Table 6 summarizes the SMES coil states and voltages with the converter switching patterns. The corresponding equation in the time-domain of the SMES coil during the ON and OFF state can be expressed as in (12), while (13) shows the prediction model of the SMES coil current after applying the Euler discretization theory.

The cost function, which manages the selection of the optimal switching state of the DC-DC chopper, can then be expressed as

$$i_{SMES}(k+1) = \begin{cases} \frac{T_s}{L_{SMES}} V_{dc\_SMES}(k) + i_{SMES}(k) & \text{if } S_1 \text{ ON and } S_2 \text{ ON} \\ -\frac{T_s}{L_{SMES}} V_{dc\_SMES}(k) + i_{SMES}(k) & \text{if } S_1 \text{ OFF and } S_2 \text{ OFF} \end{cases} \quad (12)$$

### 3.2.2 Grid side inverter

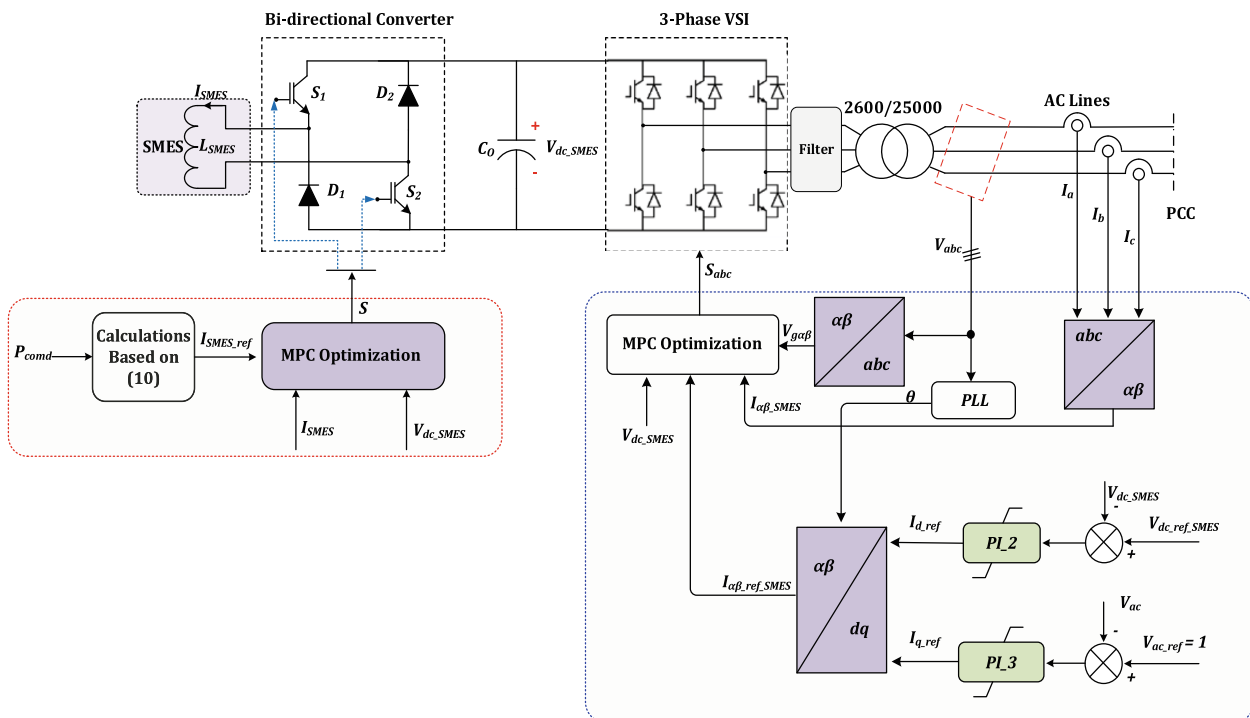
Since the SMES grid side inverter is similar to the PV inverter, its discrete model is the same as that of the derived PV system, but with different parameters for the SMES part. The  $d$ -axis reference current of the inverter is used to regulate the DC link voltage of the DC-DC chopper, while the  $q$ -axis reference of the inverter current can regulate the AC voltage at the PCC.

$$Ji_{SMES} = |I_{SMES} - i_{SMES}(k+1)| \quad (13)$$

$$L_{SMES} \frac{di_{SMES}(t)}{dt} = \begin{cases} V_{dc\_SMES}(t) & \text{if } S_1 \text{ ON and } S_2 \text{ ON} \\ -V_{dc\_SMES}(t) & \text{if } S_1 \text{ OFF and } S_2 \text{ OFF} \end{cases} \quad (14)$$

## 4 Results and discussions

The overall system in Fig. 2 with the parameters listed in Table 7 is examined using MATLAB/Simulink® software.



**Fig. 6** Control implementation for the SMES DC-DC chopper and grid-side inverter based on the MPC

**Table 5** Parameters of the PI controller with the SMES part

	$K_P$	$K_I$
$V_{dc\_SMES} (PI\_2)$	12	500
$V_{ac} (PI\_3)$	60	2000

The loading scenario and the irradiation level during the simulation are shown in Figs. 7 and 8, respectively.

The INC technique is used to extract the maximum power from the PV array. As shown in Fig. 9, the output voltage of the PV array is 380 V and 360 V during the irradiation level of 1000 W/m<sup>2</sup> and 500 W/m<sup>2</sup>, respectively. Meanwhile, Fig. 10 shows the output current from the aggregated PV array, and it is clear that the current is reduced by half (from 1900 A to 950 A) when the irradiation level is stepped down to half of its original level at 7 s. The PV array voltage and current largely match those shown in Fig. 3.

The best indicator of the effectiveness and validation of the proposed control method is the DC link voltage at the input of the PV inverter. As shown in Fig. 11, the DC link voltage follows the reference value well, despite the step change in the irradiation level. The zoomed view in Fig. 11 shows the dynamic transient of the DC link voltage when the irradiation level changes, where the settling time is around 0.02 s. The active and reactive power of the PV inverter is presented in Fig. 12, which clearly shows that the active power transmitted through the inverter into the grid matches the generated power from the PV array through the MPPT (see Figs. 9 and 10). The PV system generates the maximum power of approximately 0.5 MW at the irradiance of 1000 W/m<sup>2</sup> and 0.245 MW at the irradiance of 500 W/m<sup>2</sup>. The control method of the PV inverter is to generate zero reactive power, as shown in Fig. 12 (red line).

The performance of the SMES unit is tested under variable load and step change of PV irradiance. The proposed control method of the DC-DC chopper and bi-directional VSC are effective and robust during these events. The DC link voltages of the SMES chopper during the various changes in the load and irradiance are shown in Fig. 13. Meanwhile, the four zoomed waveforms validate the effectiveness of the proposed control method in maintaining the DC link voltage at the reference value during the transients. The deviations in the DC link voltage do not exceed ±0.6% in steady-state, while the maximum deviation does not exceed ±5% during the abnormal events. The avoidance of DC voltage

**Table 6** Switching states of the DC-DC chopper of the SMES

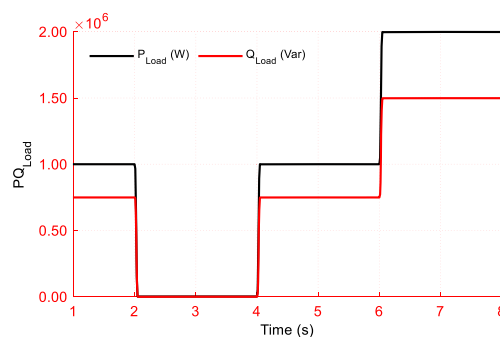
$S_1$	$S_2$	Coil voltage	Coil state
0	0	$-V_{dc\_SMES}$	Discharge
1	1	$V_{dc\_SMES}$	Charge

**Table 7** Simulation parameters

Parameter	Unit	Value
Sampling time, $T_s$	μs	40
Base line-line RMS voltage	kV	25
<b>PV system</b>		
Boost converter inductance, $L_{PV}$	μH	500
ESR of $L_{PV}$ , $R_{L\_PV}$	mΩ	0.5
DC-bus capacitance, $C_{PV}$	mF	2
DC-bus reference voltage, $V_{dc\_ref\_PV}$	V	600
Filter inductance/phase, $L_{f\_PV}$	μH	500
Filter resistance/phase, $R_{f\_PV}$	mΩ	0.5
<b>SMES</b>		
SMES coil inductance, $L_{SMES}$	H	5
SMES initial current, $I_0$	A	4000
DC-bus reference voltage, $V_{dc\_ref\_SMES}$	V	3000
DC-bus capacitance, $C_{SMES}$	mF	5
Filter inductance/phase, $L_{f\_SMES}$	μH	500
Filter resistance/phase, $R_{f\_SMES}$	mΩ	0.5

fluctuation increases the lifetime of the power electronic components.

During the connection and disconnection of the loads and step change of irradiance, the SMES current follows the reference current calculated in (10), as shown in Fig. 14. When the load is reduced at 2 s, the SMES coil begins to charge, and consequently, both the stored energy and the coil current increase. On the other hand, when the load increases at 4 s and 6 s and the irradiance is step changed at 7 s, the SMES current reduces so that the SMES operates in discharging mode and injects active power to the grid. The active and reactive power of the three-phase grid side inverter of the SMES system is depicted in Fig. 15. As can be seen, when the load changes, the active power of the SMES system will also change and can vary between negative (charging) and positive (discharging) values. It proves that the proposed MPC successfully achieves a smooth power transfer of the SMES system.



**Fig. 7** Active and reactive power scenario of the load



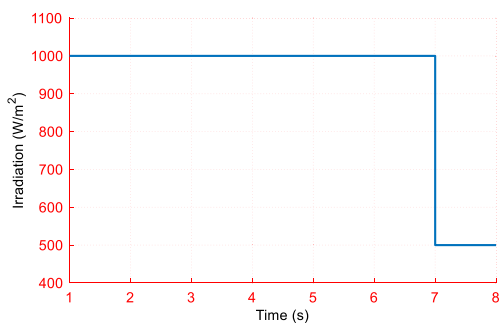


Fig. 8 The scenario of the PV array irradiance

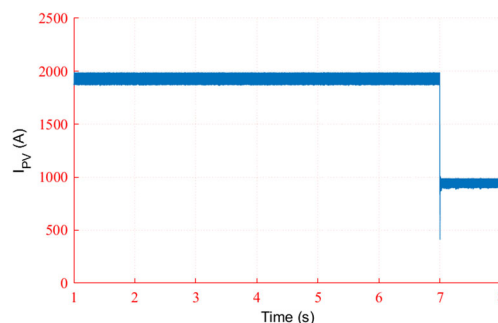


Fig. 10 The output current of the PV array

The SMES unit can match the power between the load and the utility grid, where the difference between the generation power, i.e., the summation of the power from the utility grid and PV array, and load demand will be managed by the SMES. The active power of the utility grid is maintained approximately constant by the SMES system during the whole operating range, while it fluctuates without the SMES, as compared in Fig. 16. So the use of the SMES increases the reliability, the sustainability, and the energy efficiency of the grid operation and achieves the power leveling strategy when the various events occur. In addition to active power exchange with the power system, the SMES unit can also provide reactive power compensation to the system, as shown in Fig. 15. This minimizes the reactive power fluctuation of the utility grid, as shown in Fig. 17. The AC voltages at the PCC with and without the SMES system are compared in Fig. 18, indicating better AC voltage control by the SMES system.

Table 8 summarizes the results for the active power of the utility grid, SMES, PV, and load, and it also illustrates the effectiveness of the proposed control method in achieving the power leveling strategy. The dynamic and steady-state performances for the DC link voltage of the PV and SMES systems are given in Table 9, again indicating excellent responses.

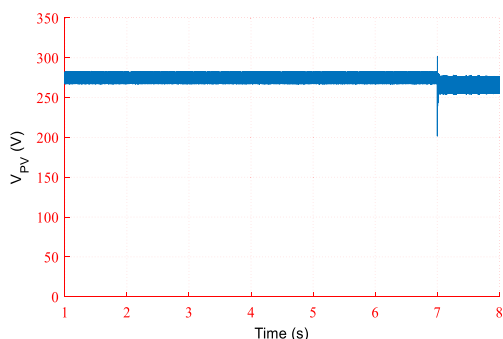


Fig. 9 The output voltage of the PV array

### 5 Conclusion

This paper integrates a PV system and SMES energy storage system with model predictive control to improve the voltage stability of the utility grid. Simulation results show that the PV array generates maximum power at different shading conditions, and the DC voltage of the grid interface inverter is well maintained during irradiation disturbance. The results also indicate that the SMES system can retain AC voltage at the PCC at its nominal value by controlling its injected reactive power to the power system during variations of load and RES output power, with a fast response due to the use of MPC. In addition, active power provided by the utility grid is maintained approximately constant by the SMES system, whereas it varies significantly without the SMES. The DC bus voltage of the DC-DC chopper in the SMES system and the current of the SMES coil are also well controlled during the various events, which validates the effectiveness of the proposed MPC control process. Future work will be carried out to develop direct power control with the SMES, employing the modeling feature of MPC.

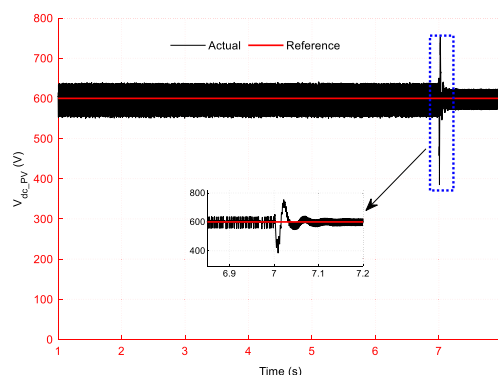
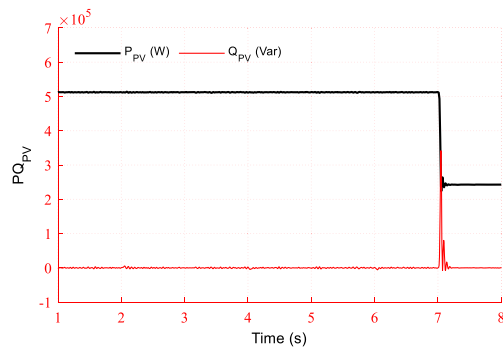
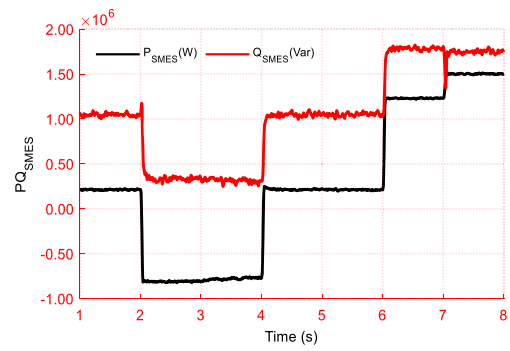


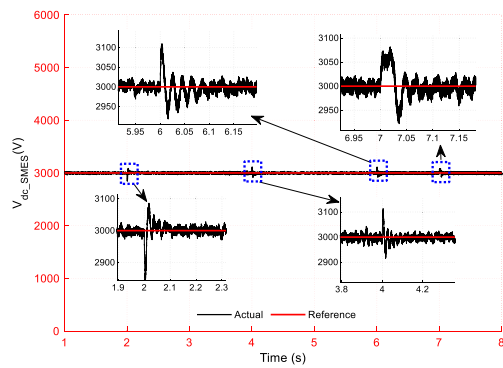
Fig. 11 The DC voltage of the PV conversion system



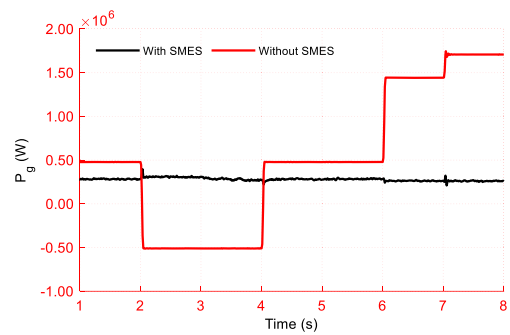
**Fig. 12** The active and reactive power of the PV grid side inverter



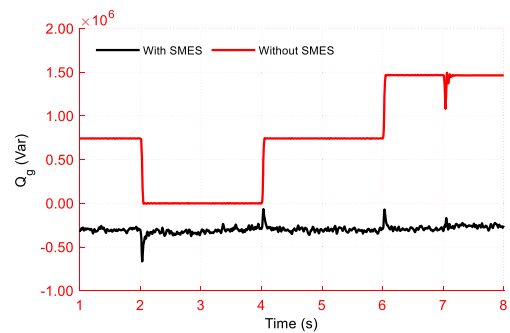
**Fig. 15** Active and reactive power of the SMES grid side inverter



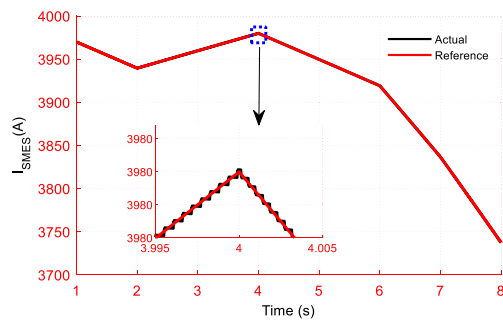
**Fig. 13** The DC bus voltage of the SMES DC-DC chopper



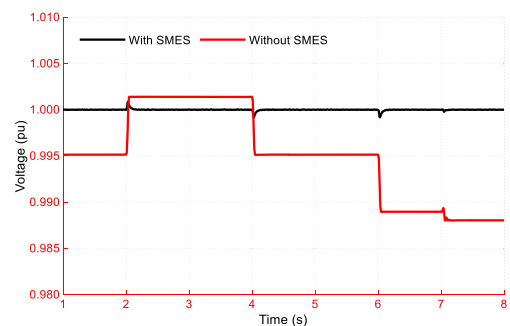
**Fig. 16** The active power of the utility grid with and without the SMES



**Fig. 17** The reactive power of the utility grid with and without the SMES



**Fig. 14** The current of the SMES coil with its reference according to the active power command



**Fig. 18** The voltage at PCC with and without the SMES

**Table 8** Active power numerical results

Case		(1–2)s	(2–4)s	(4–6)s	(6–7)s	(7–8)s
Grid (MW)	Without SMES	0.478	−0.509	0.4778	1.443	1.714
	With SMES	0.285	0.301	0.285	0.267	0.264
SMES (MW)		0.217	−0.806	0.214	1.226	1.506
PV (MW)		0.512	0.512	0.512	0.512	0.242
Load (MW)		1.000	0.000	1.000	2.000	2.000

**Table 9** Performance of the DC link voltages of the PV and SMES systems

Case		(2–4)s	(4–6)s	(6–7)s	(7–8)s
$V_{dc\_SMES}$ ( $V_{dc\_ref\_SMES} = 3000$ V)	Overshoot (%)	2.866	3.800	3.633	2.433
	Undershoot (%)	4.833	2.533	2.500	2.600
	Steady-state error (%)	0.600	0.600	0.600	0.600
$V_{dc\_PV}$ ( $V_{dc\_ref\_PV} = 600$ V)	Overshoot (%)	–			23.833
	Undershoot (%)	–			33.000
	Steady-state error (%)	6.000			8.000

## Abbreviations

INC: Incremental conductance; MPC: Model predictive control; PV: Photovoltaic; SMES: Superconducting magnetic energy storage system; RESs: Renewable energy sources; ESSs: Energy storage systems; IEA: International Energy Association; PI: Proportional-Integral; LFC: Load frequency control; PCC: Point of common connection; MPPT: Maximum power point tracking; MPP: Maximum power point; THD: Total harmonics distortion

## Acknowledgements

Not applicable.

## About the authors

**Abualkasim Bakeer** (S<sup>14</sup>) was born in Qena, Egypt in 1990. He received the B.Sc. and M.Sc. (Hons.) degrees in Electrical Engineering from Aswan University, Egypt, in 2012 and 2017, respectively. Since 2014, he joined the Electrical Engineering Department, Faculty of Engineering, Aswan University, Aswan, Egypt, first as a demonstrator, and then as an assistant lecturer in 2017. Since September 2019, he is working towards his Ph.D. degree with the Department of Electrical Power Engineering and Mechatronics, Tallinn University of Technology, Estonia. He is the author/co-author of more than 20 scientific papers. He serves as a reviewer in the IEEE TRANSACTION ON INDUSTRIAL ELECTRONICS, IEEE TRANSACTIONS ON INDUSTRIAL INFORMATICS, and IEEE Journal of Emerging and Selected Topics in Industrial Electronics. His main research topics are focusing on DC-DC converters, fault diagnosis and fault tolerance, AC drives, impedance-source power converters, and model predictive control. Mr. A. Bakeer has been a member of the Power Electronics Society (PELS), Industrial Electronics Society (IES) since 2020.

**Hossam S. Salama** was born in Egypt. He received the B.Sc. and M.Sc. degrees in electrical engineering from Aswan University, Egypt, in 2012 and 2016, respectively. He is currently pursuing the Ph.D. degree in electrical engineering with the Budapest University of Technology and Economics (BUTE). His major research interests include power system stability and control of power systems, fuzzy logic control, model predictive control, energy storage systems, and electric vehicles.

**István Vokony** received a Master of Science degree in electrical engineering and obtained his Ph.D. from Budapest University of Technology and Economics (BUTE) in 2007 and 2012, respectively. He is a senior lecturer with the BUTE department of electric power engineering. He is a former officer of the AEE Hungary student chapter. His interests include system stability, renewable energy integration, energy efficiency, and smart grids.

## Authors' contributions

**Abualkasim Bakeer:** Resources, Methodology, Software, Data curation, Writing-Original draft preparation, Validation. **Hossam S. Salama:** Conceptualization, Methodology, Software, Data curation, Writing-Original draft preparation, Visualization, Investigation. **István Vokony:** Supervision, Validation, Resources, Writing-Reviewing and Editing, Data curation. The author(s) read and approved the final manuscript.

## Funding

This research was supported in part by the Estonian Research Council grant PSG206, and in part by the Estonian Centre of Excellence in Zero Energy and Resource Efficient Smart Buildings and Districts, ZEBE, grant 2014-2020.4.01.15-0016 funded by the European Regional Development Fund.

## Availability of data and materials

Not applicable.

## Declarations

### Competing interests

The author declares that they no competing interests.

### Author details

<sup>1</sup>Electrical Engineering Department, Faculty of Engineering, Aswan University, Aswan 81542, Egypt. <sup>2</sup>Electrical Power Engineering and Mechatronics Department, School of Engineering, Tallinn University of Technology, 19086 Tallinn, Estonia. <sup>3</sup>Department of Electric Power Engineering, Budapest University of Technology and Economics, Budapest 1111, Hungary.

Received: 17 September 2020 Accepted: 10 March 2021

Published online: 13 April 2021

## References

- REN21. (2019) Renewables 2019: Global Status Report. Retrieved from [https://www.ren21.net/wp-content/uploads/2019/05/gsr\\_2019\\_full\\_report\\_en.pdf](https://www.ren21.net/wp-content/uploads/2019/05/gsr_2019_full_report_en.pdf).
- Salama, H. S., & Vokony, I. (2020). Comparison of different electric vehicle integration approaches in presence of photovoltaic and superconducting magnetic energy storage systems. *Journal of Cleaner Production*, 260, 121099. <https://doi.org/10.1016/j.jclepro.2020.121099>.
- Zablocki, A. (2019). *Energy storage: fact sheet (2019)*.
- Mohamad, F., Teh, J., Lai, C.-M., & Chen, L.-R. (2018). Development of energy storage systems for power network reliability: A review. *Energies*, 11(9), 2278.
- Deng, J., Shi, J., Liu, Y., & Tang, Y. (2016). Application of a hybrid energy storage system in the fast charging station of electric vehicles. *IET Generation, Transmission and Distribution*, 10(4), 1092–1097. <https://doi.org/10.1049/iet-gtd.2015.0110>.
- Liu, Y., Tang, Y., Shi, J., Shi, X., Deng, J., & Gong, K. (2015). Application of small-sized SMES in an EV charging station with DC bus and PV system. *IEEE Transactions on Applied Superconductivity*, 25(3), 1–6.
- Salama, H. S., Aly, M. M., Abdel-Akher, M., & Vokony, I. (2019). Frequency and voltage control of microgrid with high WECS penetration during wind gusts using superconducting magnetic energy storage. *Electrical Engineering*, 101(3), 771–786. <https://doi.org/10.1007/s00202-019-00821-w>.
- Rodríguez, J., & Cortes, P. (2012). *Predictive control of power converters and electrical drives*, (1st ed., ). Wiley. <https://doi.org/10.1002/9781119941446>.
- Kouro, S., Cortés, P., Vargas, R., Ammann, U., & Rodríguez, J. (2009). Model predictive control - a simple and powerful method to control power converters. *IEEE Transactions on Industrial Electronics*, 56(6), 1826–1838. <https://doi.org/10.1109/TIE.2008.2008349>.
- Cortés, P., Kazmierkowski, M. P., Kennel, R. M., Quevedo, D. E., & Rodríguez, J. (2008). Predictive control in power electronics and drives. *IEEE Transactions on Industrial Electronics*, 55(12), 4312–4324. <https://doi.org/10.1109/TIE.2008.2007480>.
- Bakeer, A., Ismeil, M. A., & Orabi, M. (2016). A powerful finite control set-model predictive control algorithm for quasi Z-source inverter. *IEEE Transactions on Industrial Informatics*, 12(4), 1371–1379. <https://doi.org/10.1109/TII.2016.2569527>.
- Chai, M., Gorla, N. B. Y., & Panda, S. K. (2020). Fault detection and localization for cascaded H-bridge multilevel converter with model predictive control. *IEEE Transactions on Power Electronics*, 1–1.
- Oshnoei, A., Kheradmandi, M., & Oshnoei, S. (2019). Optimal model predictive control of photovoltaic plants for frequency regulation in an interconnected power system. In *34th International Power System Conference, PSC 2019*, (pp. 428–433).
- Wang, Z., Zou, Z., & Zheng, Y. (2013). Design and control of a photovoltaic energy and SMES hybrid system with current-source grid inverter. *IEEE Transactions on Applied Superconductivity*, 23(3), 5701505.
- Nguyen, T. T., Yoo, H. J., & Kim, H. M. (2016). Applying Model Predictive Control to SMES System in Microgrids for Eddy Current Losses Reduction. *IEEE Transactions on Applied Superconductivity*, 26(4), 1–5.
- Sultan, Y. A., Kaddah, S. S., & Elhosseini, M. A. (2017). Enhancing smart grid transient performance using storage device-based MPC controller. *IET Renewable Power Generation*, 11(10), 1316–1324. <https://doi.org/10.1049/iet-rpg.2016.0892>.
- Zargar, M. Y., Mufti, M. U. D., & Lone, S. A. (2018). Voltage and frequency control of a hybrid Wind-Diesel system using SVC and predictively controlled SMES. In *2017 6th International Conference on Computer Applications in electrical engineering - recent advances, CERA 2017*, (vol. 2018, pp. 25–30).
- Zargar, M. Y., Ud-Din Mufti, M., & Lone, S. A. (2017). Adaptive predictive control of a small capacity SMES unit for improved frequency control of a wind-diesel power system. *IET Renewable Power Generation*, 11(14), 1832–1840. <https://doi.org/10.1049/iet-rpg.2017.0074>.
- Mir, A. S., & Senroy, N. (2017). Adaptive model predictive control scheme for application of SMES for load frequency control. In *IEEE Transactions on Power Systems*.
- Ali, H. H., Kassem, A. M., Al-Dhaifallah, M., & Fathy, A. (2020). Multi-verse optimizer for model predictive load frequency control of hybrid multi-

- interconnected plants comprising renewable energy. *IEEE Access*, 8, 114623–114642. <https://doi.org/10.1109/ACCESS.2020.3004299>.
21. Ali, H. H., Fathy, A., & Kassem, A. M. (2020). Optimal model predictive control for LFC of multi-interconnected plants comprising renewable energy sources based on recent sooty terns approach. *Sustainable Energy Technologies and Assessments*, 42, 100844. <https://doi.org/10.1016/j.seta.2020.100844>.
  22. Elsis, M., Soliman, M., Aboelela, M. A. S., & Mansour, W. (2018). Improving the grid frequency by optimal design of model predictive control with energy storage devices. *Optimal Control Applications & Methods*, 39(1), 263–280. <https://doi.org/10.1002/oca.2346>.
  23. Elsis, M., Aboelela, M., Soliman, M., & Mansour, W. (2018). Design of optimal model predictive controller for LFC of nonlinear multi-area power system with energy storage devices. *Electric Power Components & Systems*, 46(11–12), 1300–1311. <https://doi.org/10.1080/15325008.2018.1469056>.
  24. Kreeumporn, W., & Ngamroo, I. (2016). Optimal superconducting coil integrated into PV generators for smoothing power and regulating voltage in distribution system with PHEVs. *IEEE Transactions on Applied Superconductivity*, 26(7), 1–5.
  25. Lekouaghet, B., Boukabou, A., Lourci, N., & Bedrine, K. (2018). Control of PV grid connected systems using MPC technique and different inverter configuration models. *Electric Power Systems Research*, 154, 287–298. <https://doi.org/10.1016/j.epr.2017.08.027>.
  26. Salama, H. S., Aly, M. M., & Vokony, I. (2019). Voltage/frequency control of isolated unbalanced radial distribution system fed from intermittent wind/PV power using fuzzy logic controlled-SMES. In *Proceedings of 2019 International Conference on Innovative Trends in Computer Engineering, ITCE 2019*, (pp. 414–419).
  27. Ayad, A., Karamanakos, P., & Kennel, R. (2017). Direct model predictive current control strategy of quasi-Z-source inverters. *IEEE Transactions on Power Electronics*, 32(7), 5786–5801. <https://doi.org/10.1109/TPEL.2016.2610459>.
  28. Mosa, M., Balog, R. S., & Abu-Rub, H. (2017). High performance predictive control of quasi impedance source inverter. *IEEE Transactions on Power Electronics*, 32(4), 3251–3262. <https://doi.org/10.1109/TPEL.2016.2531989>.
  29. Bakeer, A., Ismeil, M. A., & Orabi, M. (2017). Modified finite control set-model predictive controller (MFCS-MPC) for quasi Z-source inverters based on a current observer. *Journal of Power Electronics*, 17(3), 610–620. <https://doi.org/10.6113/JPE.2017.17.3.610>.
  30. Cortés, P., et al. (2009). Guidelines for weighting factors design in model predictive control of power converters and drives. In *Proceedings of the IEEE international conference on industrial technology*.
  31. Liu, F., Duan, S., Liu, F., Liu, B., & Kang, Y. (2008). A variable step size INC MPPT method for PV systems. *IEEE Transactions on Industrial Electronics*, 55(7), 2622–2628.

Submit your manuscript to a SpringerOpen<sup>®</sup> journal and benefit from:

- Convenient online submission
- Rigorous peer review
- Open access: articles freely available online
- High visibility within the field
- Retaining the copyright to your article

---

Submit your next manuscript at ► [springeropen.com](https://www.springeropen.com)

---